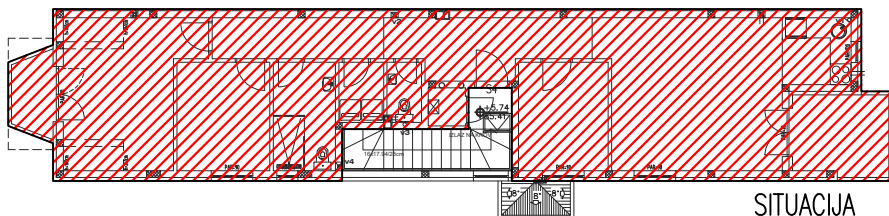


SITUACIJA k.p. 3845/96 objekat 3



Ulica Kosmajaska bb

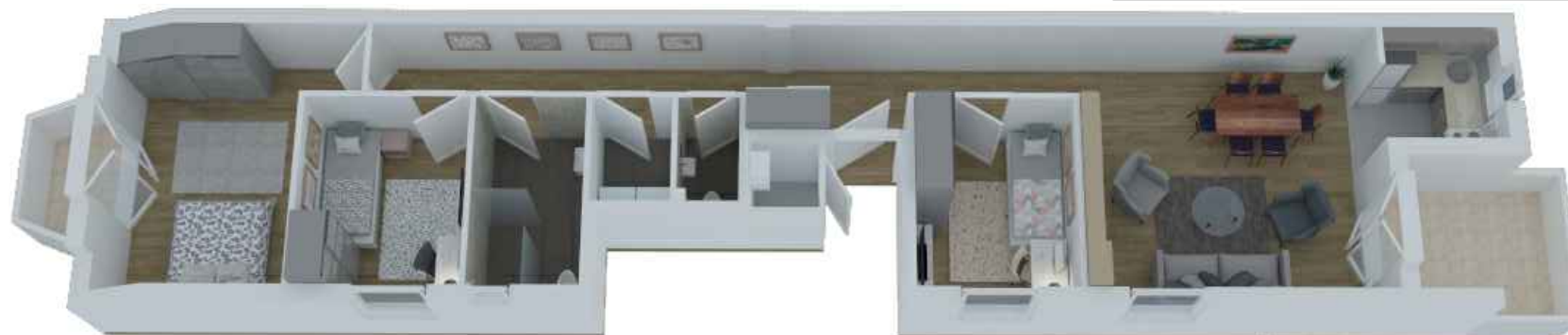
SITUACIJA

POTKROVLJE

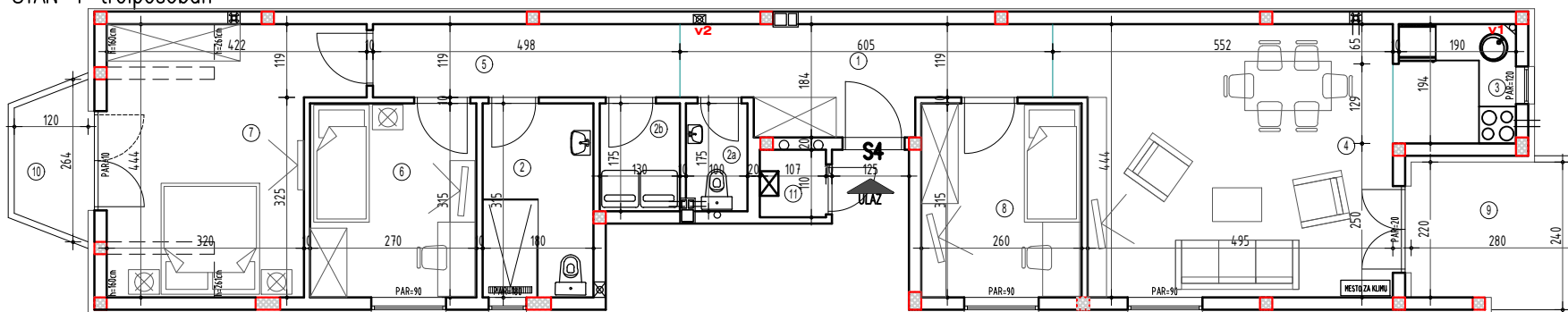
| S4 - troiposoban | | | | | |
|------------------|------------------------------------|--------------|----------------------|-----------------------|----------------------------|
| BR. | NAZIV PROSTORIJE | VRSTA PODA | POVRŠINA PODA | KOEF. | KORISNA POVRŠINA |
| 1 | Ulaz | parket | 8,88 m ² | 1,00 | 8,88 m ² |
| 2 | Kupatilo | ker. pločice | 5,67 m ² | 1,00 | 5,67 m ² |
| Za | WC | ker. pločice | 1,71 m ² | 1,00 | 1,71 m ² |
| Zb | Vešeraj | ker. pločice | 2,27 m ² | 1,00 | 2,27 m ² |
| 3 | Kuhinja | ker. pločice | 3,80 m ² | 1,00 | 3,80 m ² |
| 4 | Dnevna soba | parket | 22,85 m ² | 1,00 | 22,85 m ² |
| 5 | Deqažman | parket | 5,92 m ² | 1,00 | 5,92 m ² |
| 6 | Soba | parket | 8,50 m ² | 1,00 | 8,50 m ² |
| 7 | Soba | parket | 15,64 m ² | 1,00 | 15,64 m ² |
| 8 | Soba | parket | 8,19 m ² | 1,00 | 8,19 m ² |
| 9 | Terasa | ker. pločice | 6,60 m ² | 1,00 | 6,60 m ² |
| 10 | Terasa | ker. pločice | 2,77 m ³ | 1,00 | 2,77 m ³ |
| 11 | Prostorija za smeštaj gasnog kotla | ker. pločice | 1,17 m ² | 1,00 | 1,17 m ² |
| | | | | UKUPNO: | 93,97 m ² |
| | | | | komercijalna površina | k-0,97: |
| | | | | | 91,15 m² |

IME KUPCA

kontakt tel.



STAN 4--troiposoban



PRIMUS LINE DOO Novi Sad